

# EPDM Profile

Endlos extrudierte Profile aus EPDM können als Hohlkammer-, Schlauch-, Massivgummi- oder Moosgummiprofile hergestellt werden.



**Kremer liefert Profile u.a. in folgende Branchen:**

- Tür-, Fenster- und Fassadenbau
- Wintergarten- und Gewächshausbau
- Erneuerbare Energien
- Fahrzeug- und Nutzfahrzeugbau

**Kremer**

KREMER GmbH • Kinzigstraße 9 • 63607 Wächtersbach  
TEL 06053/6161-0 • FAX 06053/9739 • MAIL [info@kremer-tec.de](mailto:info@kremer-tec.de)  
[www.kremer-tec.de](http://www.kremer-tec.de)

# EPDM Profile



Der **Gradmesser für die Qualität** eines Dichtungsprofils im **Tür-, Fenster- und Fassadenbau** wird einzig und alleine durch die Witterungsbeständigkeit bestimmt. Kälte, Hitze, Feuchtigkeit, Ozon und Sonnenlicht dürfen die Funktionalität nicht beeinträchtigen.

Unsere **Spezial-EPDM-Werkstoffe** für die Herstellung unserer Profile in den Härteklassen 50 bis 90 Shore A entsprechen der **DIN 7863-1-Tabelle 2 und 3**. Wir liefern Profile mit **Toleranzen** nach DIN 3302-1 **E2** und je nach Bedarf oder technischer Erfordernisse gegebenenfalls auch nach DIN 3302-1 **E1**.

**Unser Lieferprogramm von EPDM-Profilen beinhaltet:**

**MOOSGUMMIPROFILE**

PROFILRAHMEN

**VIERKANTPROFILE**

**WEICHGUMMIPROFILE**

**RUNDSCHNÜRE**

**PROFILRAHMEN**

Auf den nachfolgenden Seiten sehen Sie eine Auswahl von Profilquerschnitten von mittlerweile **über 3.000 kundenspezifischen Dichtungsprofilen**.

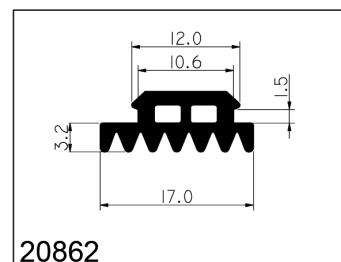
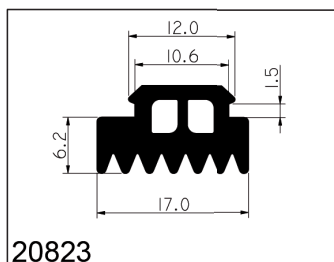
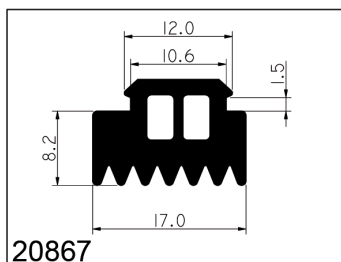
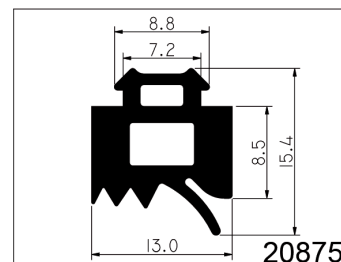
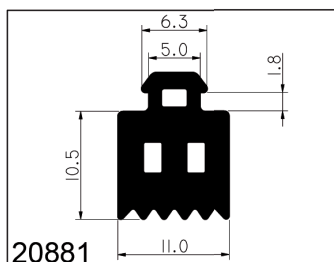
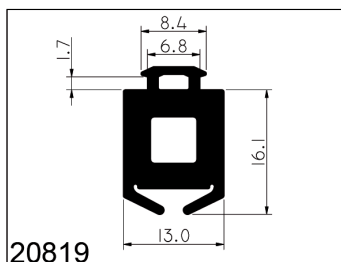
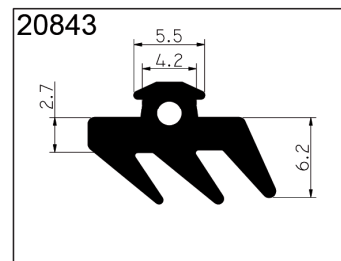
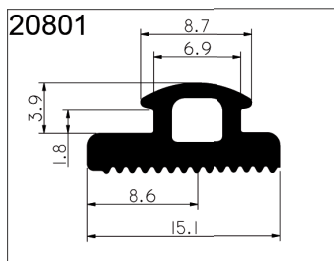
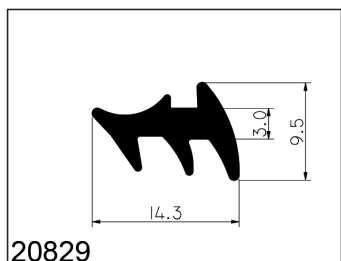
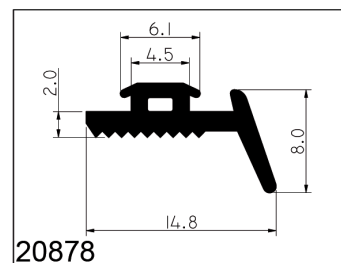
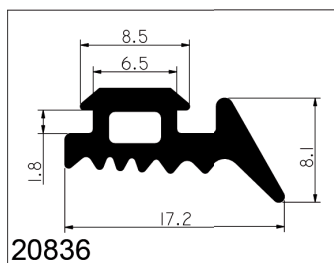
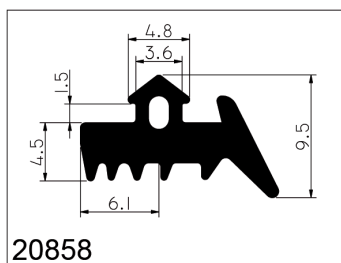
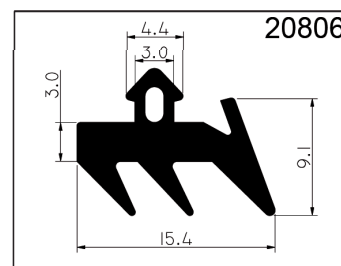
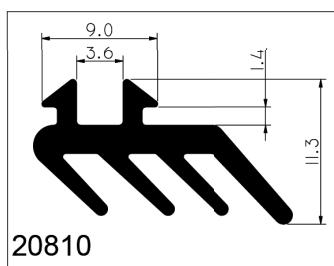
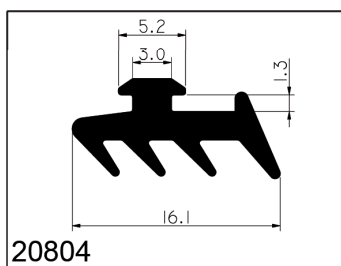
# EPDM Profile



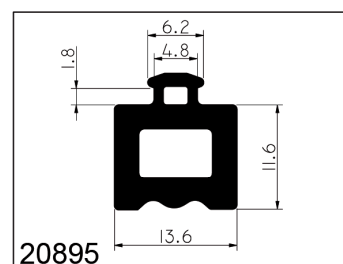
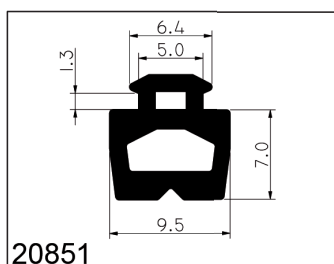
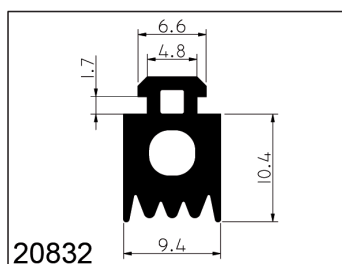
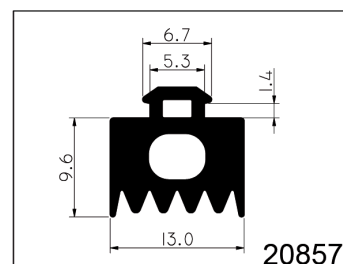
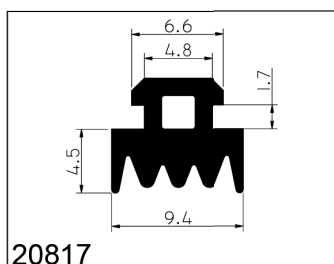
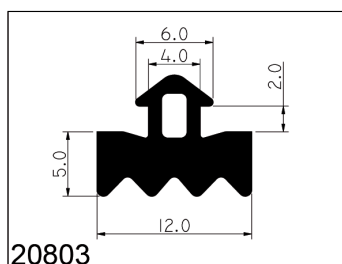
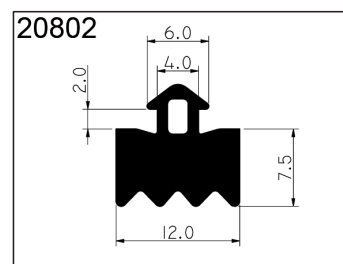
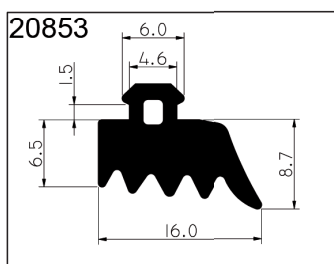
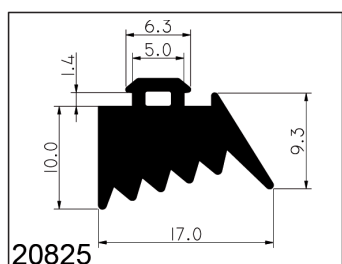
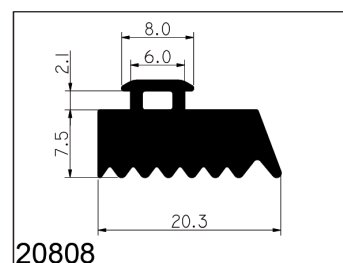
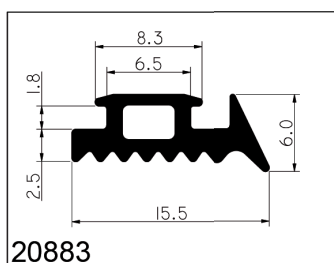
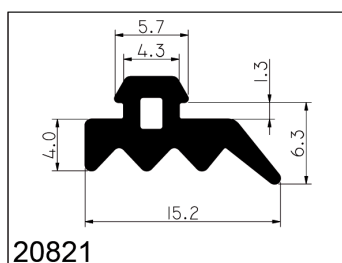
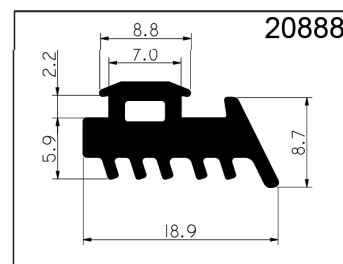
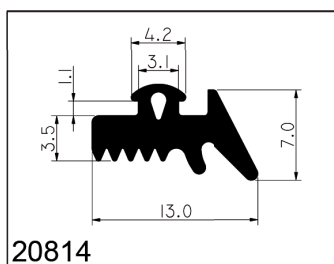
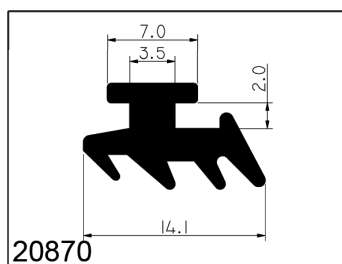
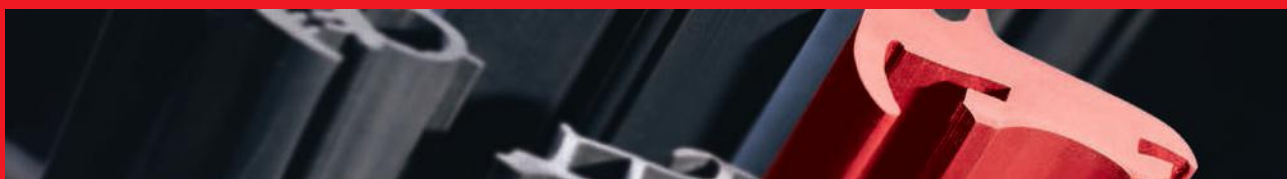
**Kremer**

KREMER GmbH • Kinzigstraße 9 • 63607 Wächtersbach  
TEL 06053/6161-0 • FAX 06053/9739 • MAIL [info@kremer-tec.de](mailto:info@kremer-tec.de)  
[www.kremer-tec.de](http://www.kremer-tec.de)

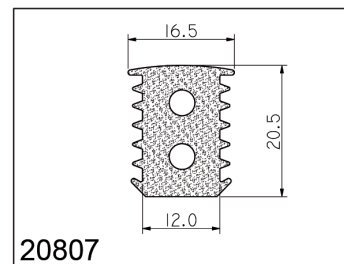
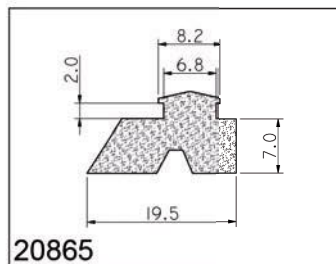
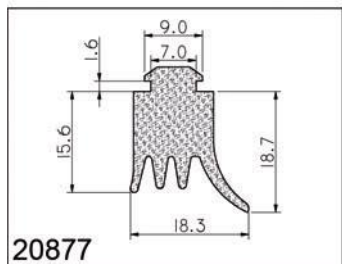
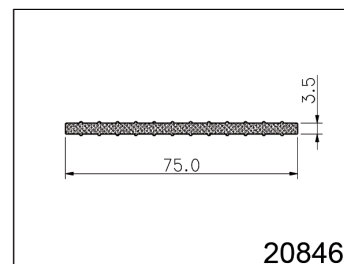
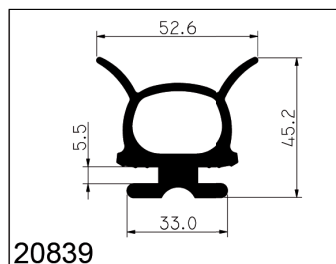
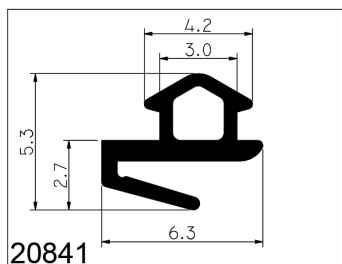
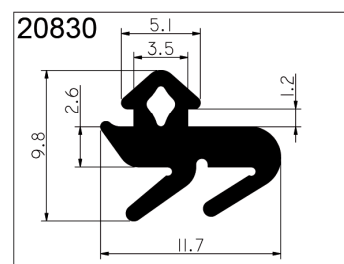
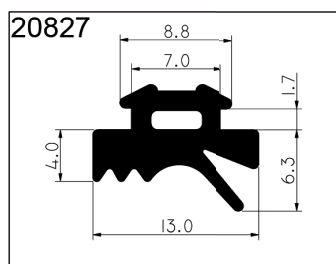
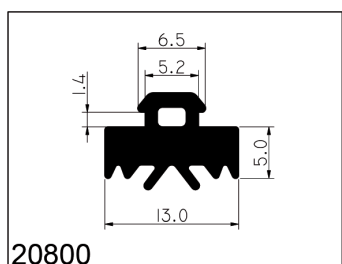
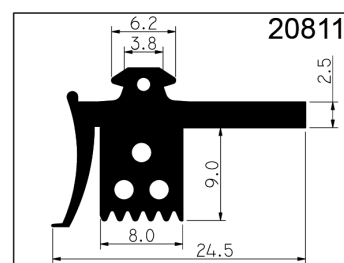
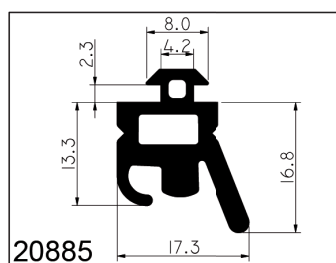
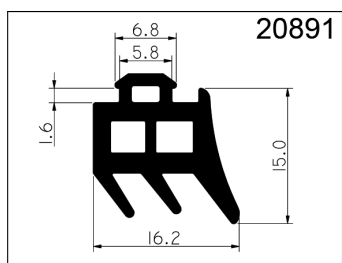
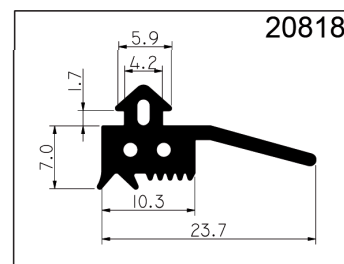
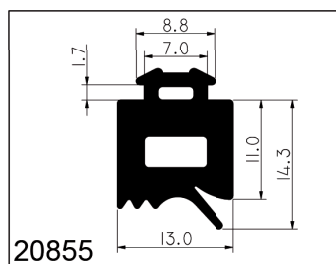
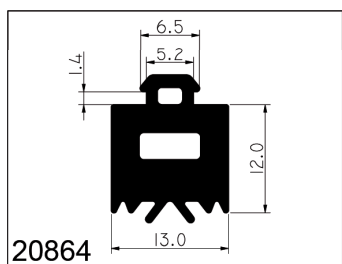
# EPDM Profile



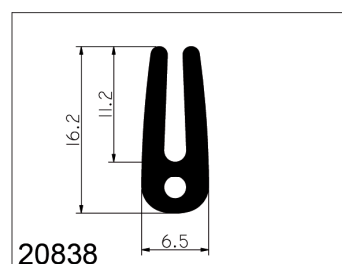
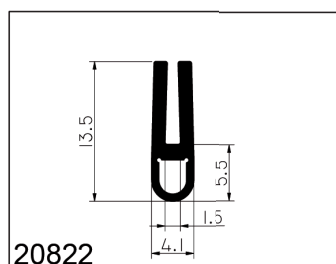
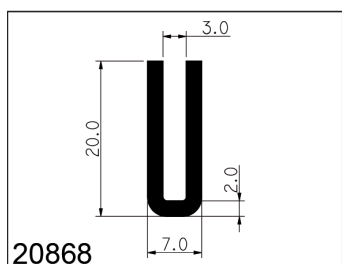
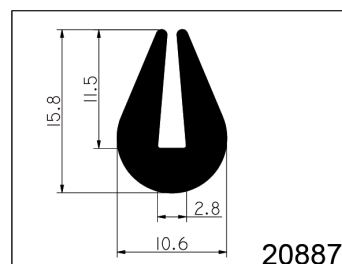
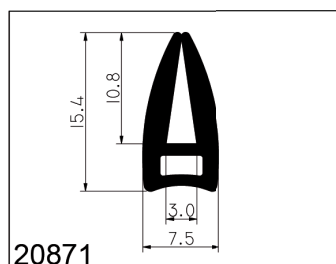
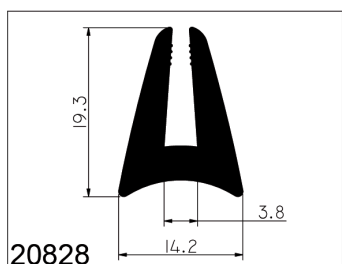
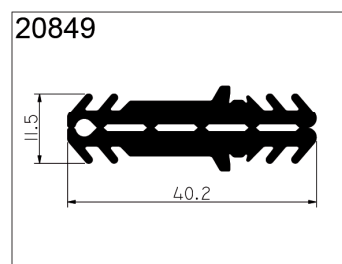
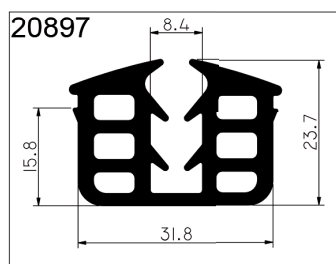
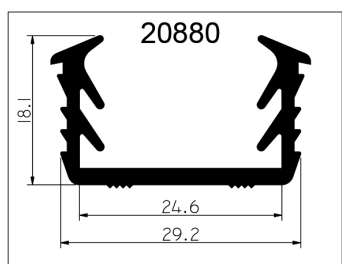
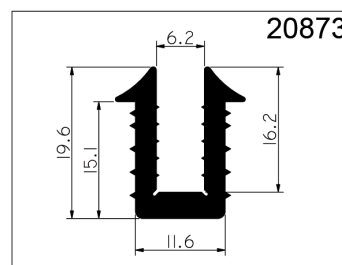
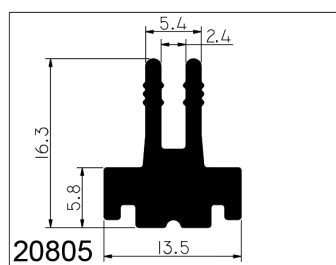
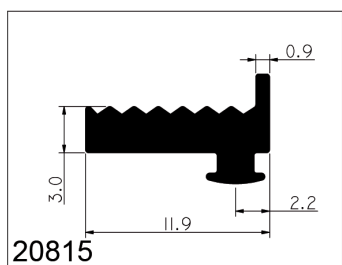
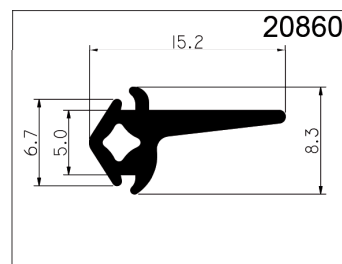
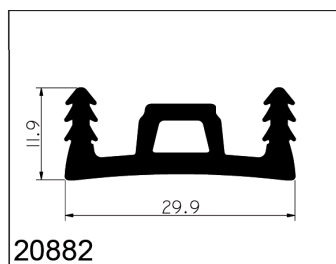
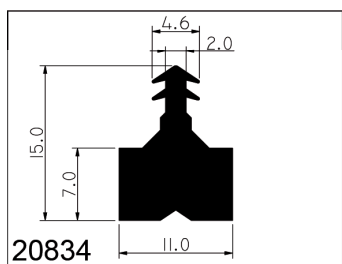
# EPDM Profile



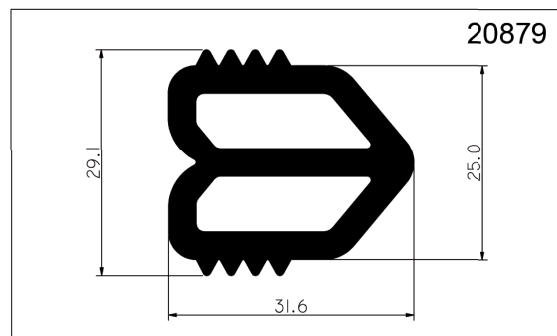
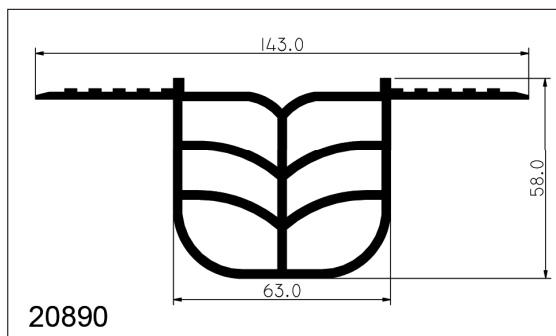
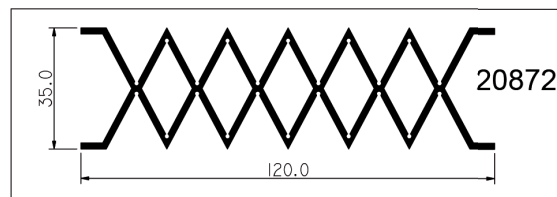
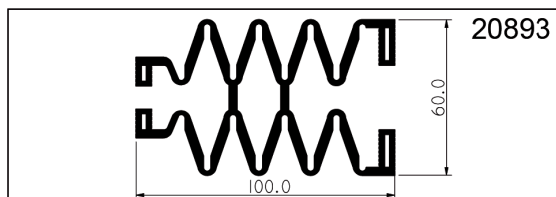
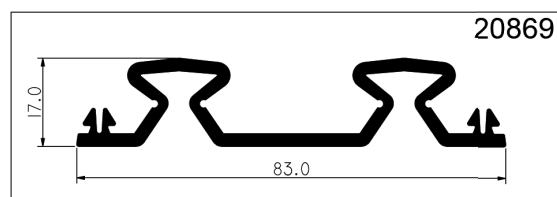
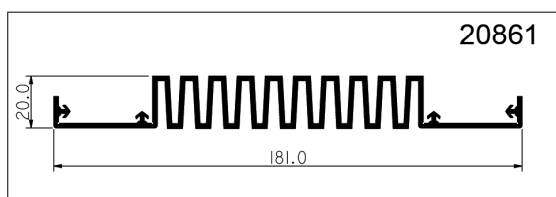
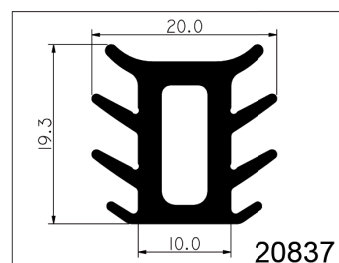
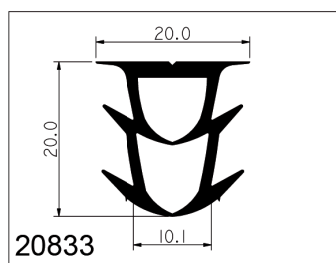
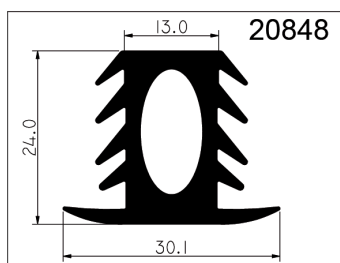
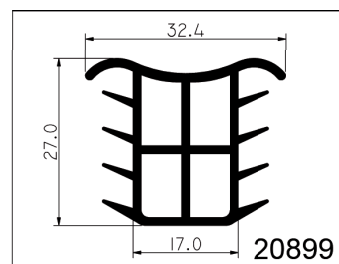
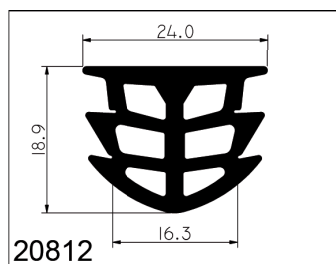
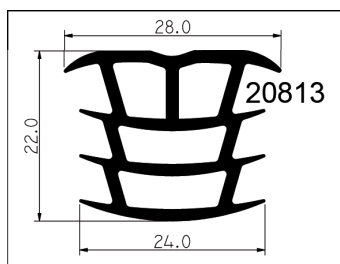
# EPDM Profile



# EPDM Profile

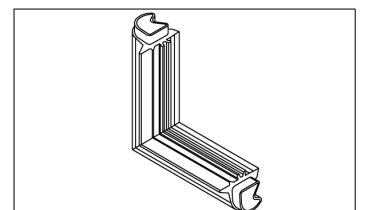
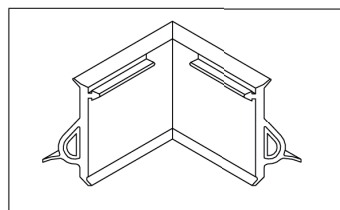
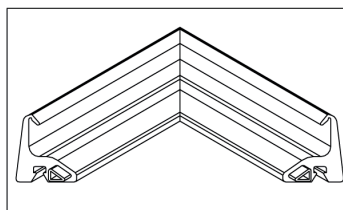
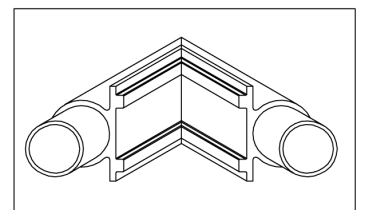
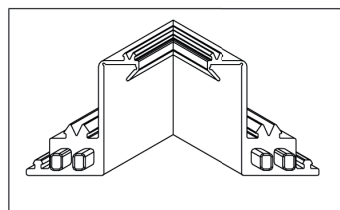
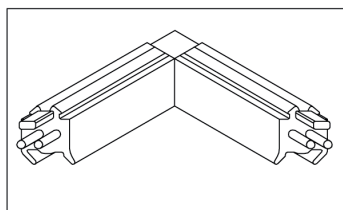
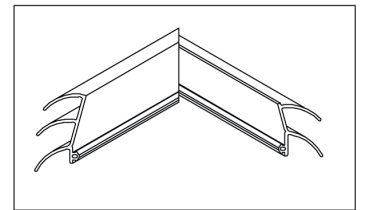
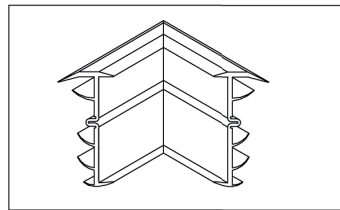
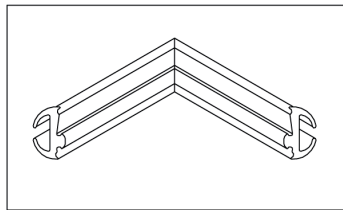
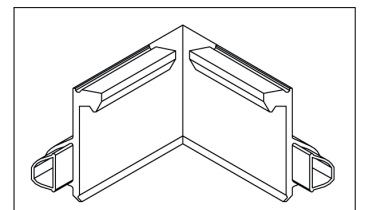
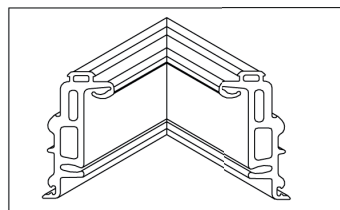
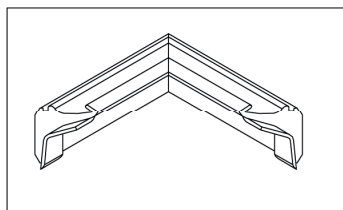
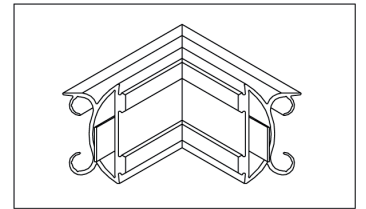
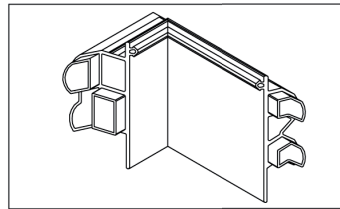
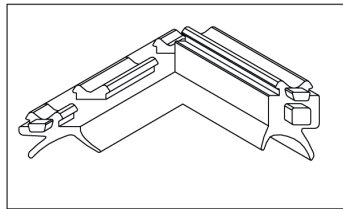
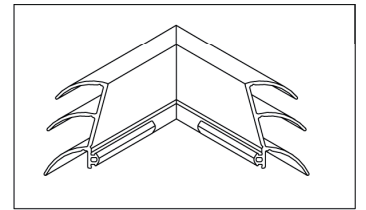
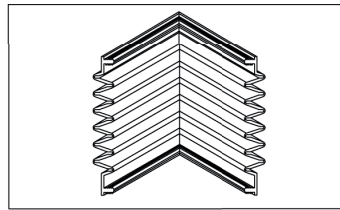
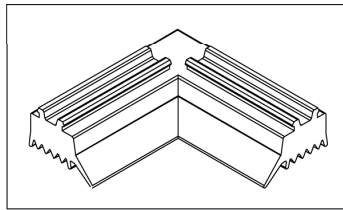
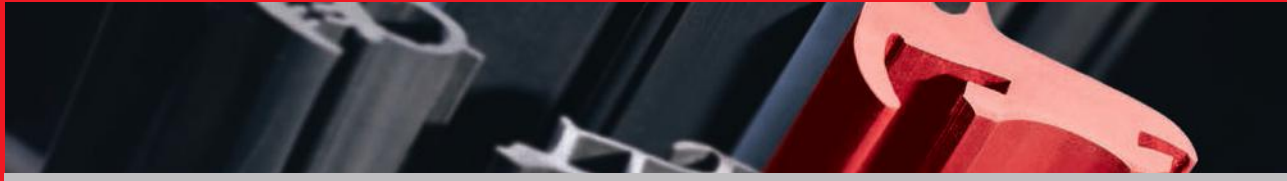


# EPDM Profile

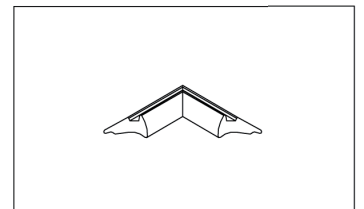
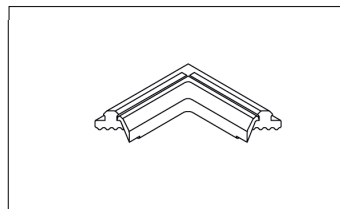
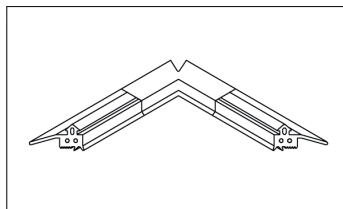
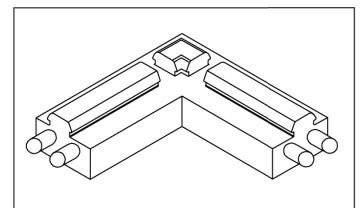
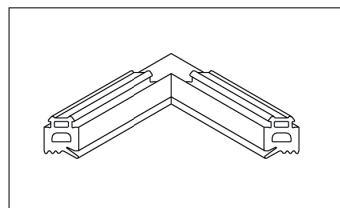
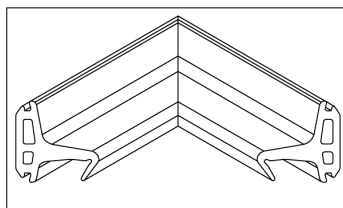
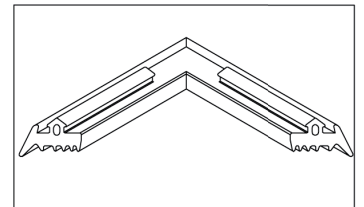
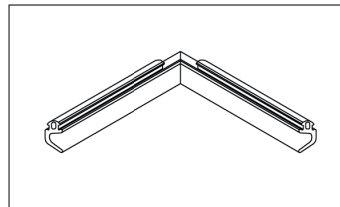
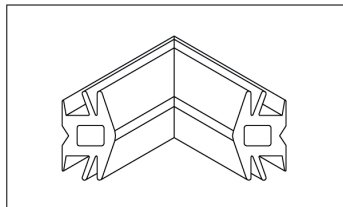
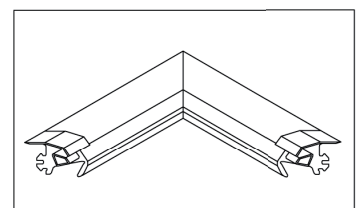
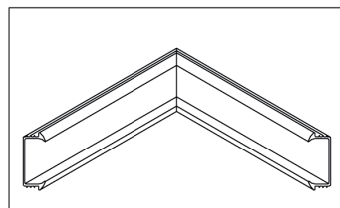
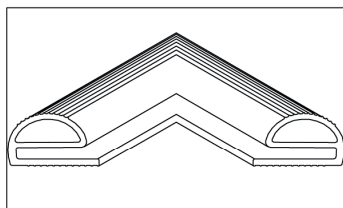
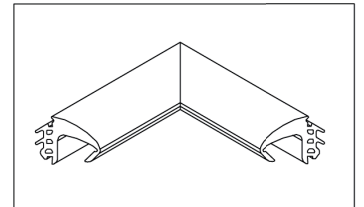
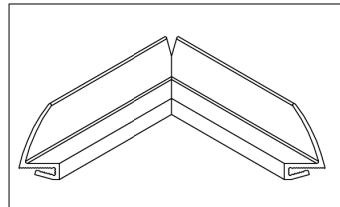
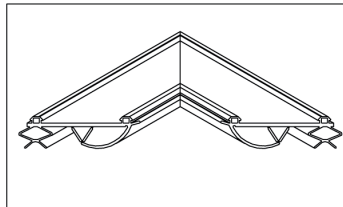
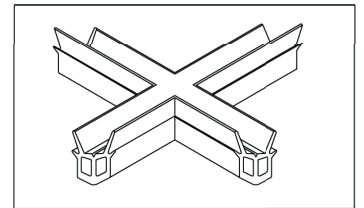
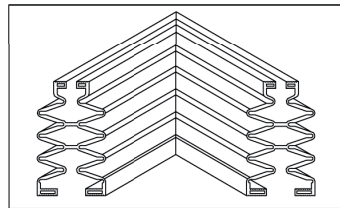
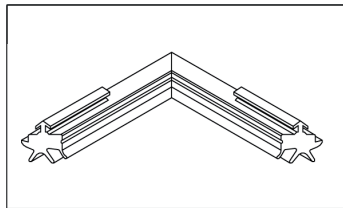




# EPDM Profilelecken



# EPDM Profilelecken



# EPDM Profile



## Information / Angebot

- Ich interessiere mich für ein bestimmtes Profil.

Art.-Nr.: \_\_\_\_\_

- Bitte senden Sie mir ein Angebot zu.

Menge: \_\_\_\_\_

- Bitte nehmen Sie für ein kostenloses Beratungsgespräch Kontakt mit mir auf.

Firma: \_\_\_\_\_

Name: \_\_\_\_\_

E-Mail: \_\_\_\_\_



Weitere Informationen zum Thema Profile  
finden Sie auf unserer Homepage:  
**[www.kremer-tec.de](http://www.kremer-tec.de)**

**KREMER** GmbH • Kinzigstraße 9 – Industriegebiet • D-63607 Wächtersbach  
Telefon +49 6053 61 61 - 0 • Telefax +49 6053 97 39 [info@kremer-tec.de](mailto:info@kremer-tec.de) • [www.kremer-tec.de](http://www.kremer-tec.de)

